



# Leading Person-Centred Services for People Living with Dementia Workshop

03 Sept 2019





Mrs Theresa Lee, Deputy CEO doing  
a welcome address







## Using the VIPS framework for Person-centred Dementia Care

**Professor Dawn Brooker &  
Isabelle Latham**





Getting to know each other  
You will introduce each others object and  
memory to the group sitting on your table







Group activity  
VIPS Indicator









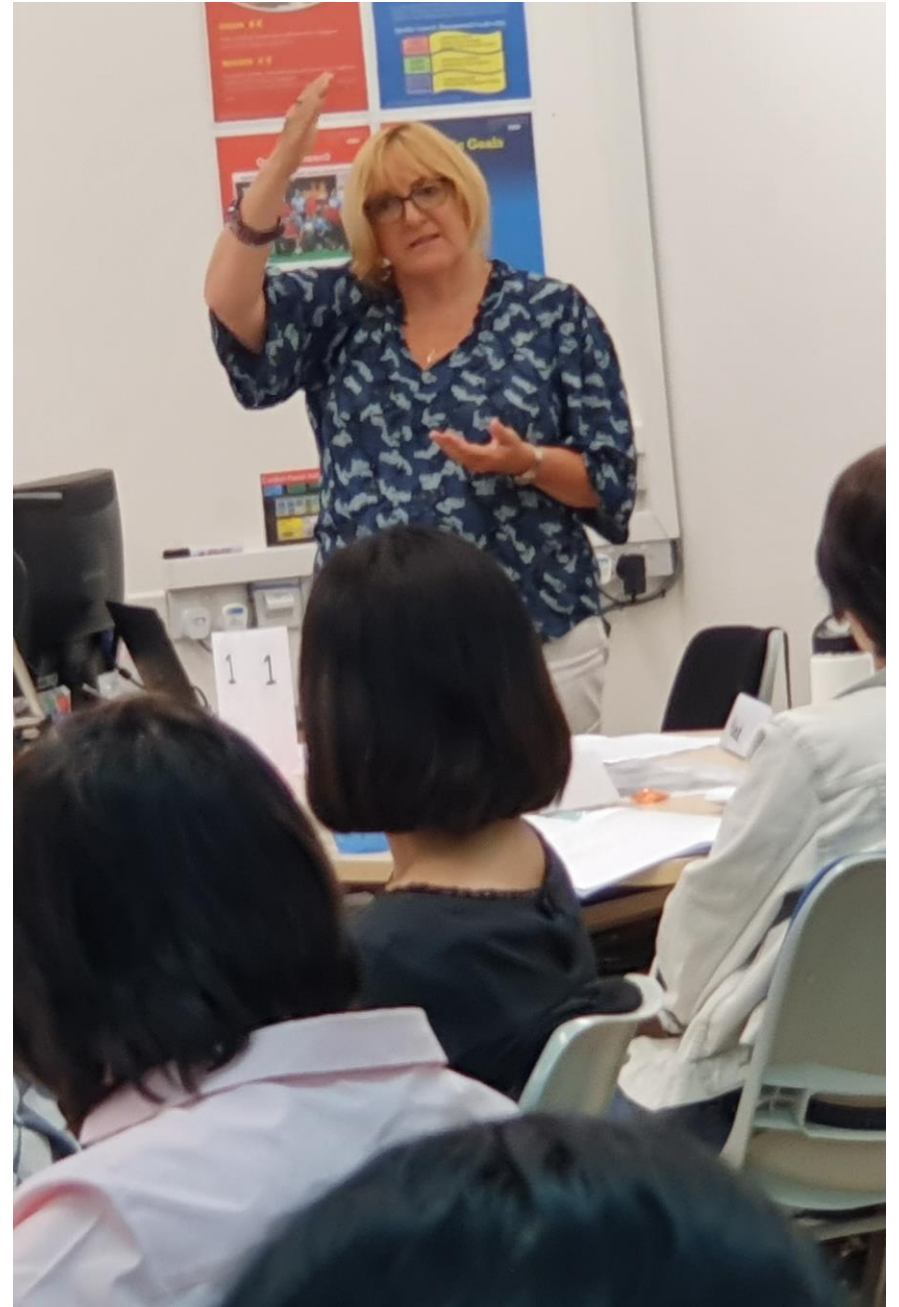
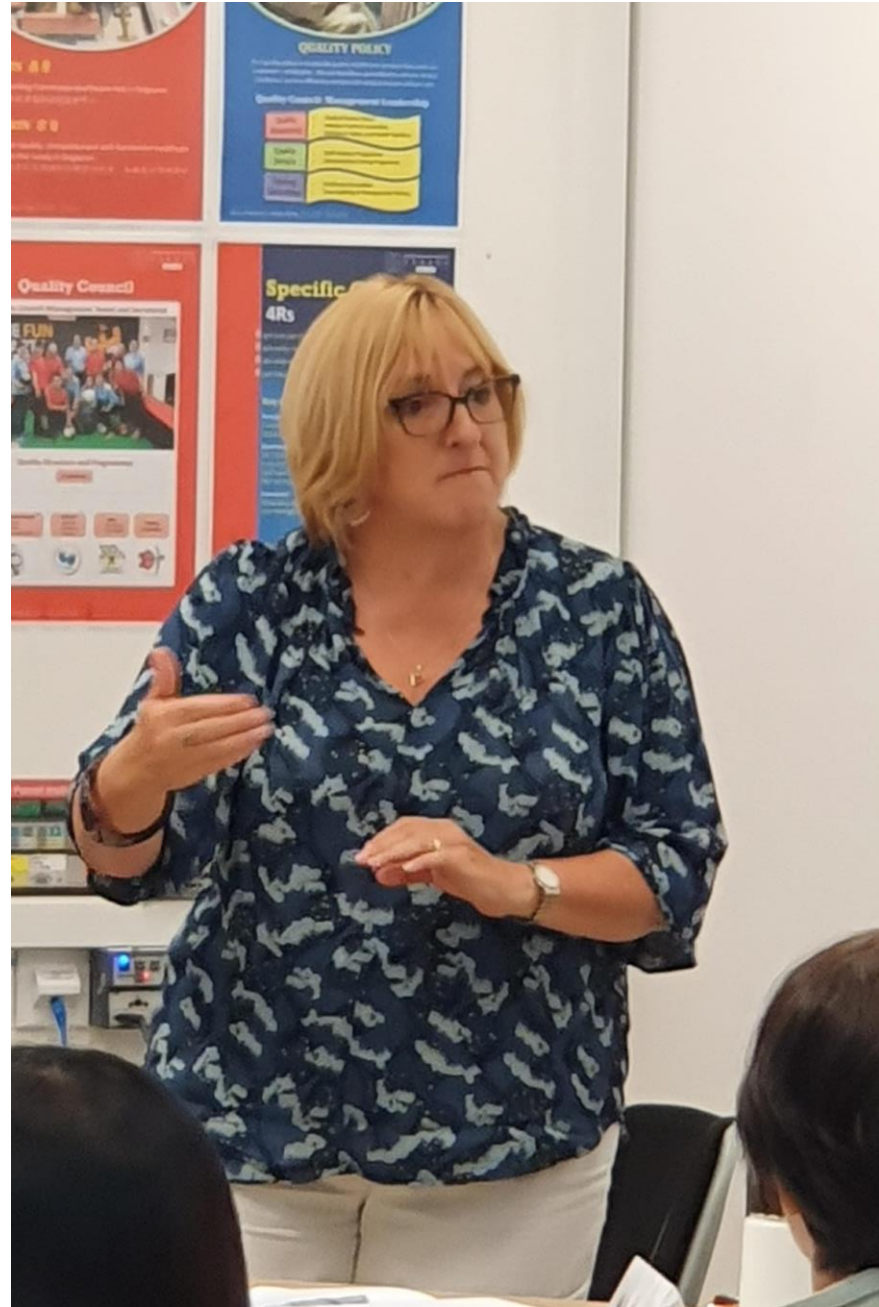




# Validate Emotion Reassure Activity

---









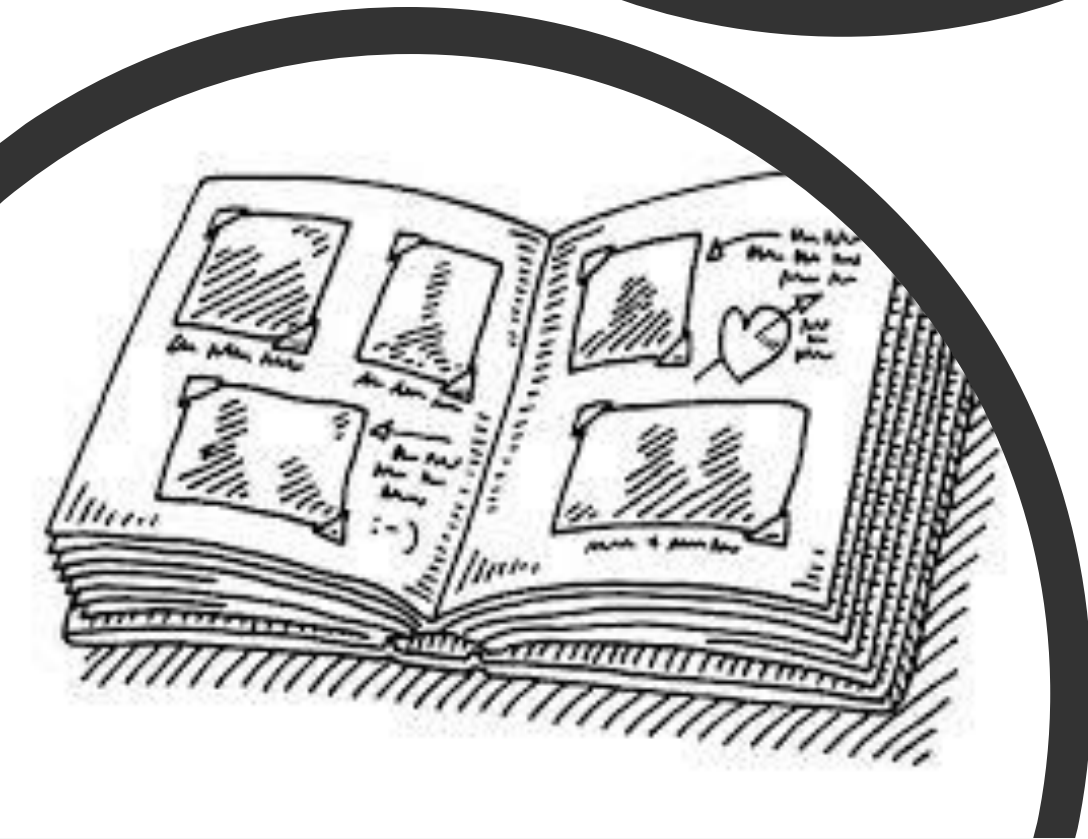
任重道遠  
邱鳳有敬上

KWONG WAI SHIU HOSPITAL  
廣惠肇留醫院  
Since 1910

KWONG WAI SHIU HOSPITAL  
廣惠肇留醫院  
Since 1910

Let's  
Dance!





For the album

*Thank  
you*







